



3 Bed Semi Detached House

Offers Over: £179,950

12 Dalriada Place, Kilmichael Glassary, Argyll, PA31 8QA

An ideal starter family home set within a peaceful cul de sac in the popular semi-rural village of Kilmichael. Conveniently located close to the local primary school and the well-known Horseshoe Inn. The property is just a short 5-minute drive from Lochgilphead, where a wider range of amenities can be found including a supermarket, hospital, dentist, butcher and fishmongers. The accommodation comprises a lounge/diner, modern kitchen, three double bedrooms on the first floor, two of which enjoy elevated glen views to the rear, along with a ground floor shower room and a family bathroom on the upper level. Externally, the property benefits from oil central heating, double glazing, partially floored loft with ladder access, private gardens, a detached timber workshop, sheds and a private driveway providing parking for two vehicles. Broadband, 4G and digital television are available at the property. Council tax band C - EPC rating C69.




ARGYLL
Estate Agents

Entrance

Carpeted entrance with a uPVC door from the front of the property, providing space for outdoor clothing and footwear. Provides access to the hallway and ground floor shower room. Finished with pendant lighting.

Hallway

Carpeted hallway with stairs leading to the first floor accommodation. The space provides access to the lounge/diner and kitchen, and includes a small cupboard beneath the stairs for storage. Finished with a central heating radiator, pendant lighting and socket points.

Lounge/Diner 6.45m x 2.95m

A good sized open plan lounge/dining room with full height dual aspect windows to the front and rear, allowing for excellent natural light. The space offers room for both lounge and dining furniture and features an electric fire as a focal point. Finished with carpeted flooring, a central heating radiator, feature pendant lighting and socket points.

Kitchen 3.19m x 2.73m

A recently upgraded kitchen fitted with modern handleless wall and base cabinets, offering ample worktop space. Rear window and door provide access to the rear garden and patio, allowing for good natural light. There is space and plumbing for white goods, along with a ceramic sink with swan neck mixer tap and extractor hood above the cooker space. Finished with tile effect vinyl flooring, tile effect splashbacks, spotlighting and socket points.

Shower Room 1.91m x 1.67m

Three-piece suite comprising a quadrant enclosure with electric shower and wet wall splashbacks, wash hand basin and WC. Finished with tiled walls, carpeted flooring, opaque window and heated towel rail.

First Floor

Carpeted staircase with handrail leading to a carpeted landing. Finished with pendant lighting and loft hatch access. Provides access to Bedrooms one, two, three and family bathroom.

Bedroom One 3.21m x 2.73m

A double bedroom featuring full height windows providing rural glen views to the rear. The room benefits from an inbuilt wardrobe and offers space for freestanding furniture. Finished with carpeted flooring, central heating radiator, pendant lighting and socket points.

Bedroom Two 3.05m x 2.97m

A double bedroom featuring full height windows providing rural glen views to the rear. The room benefits from double inbuilt wardrobes with mirrored doors and offers space for freestanding furniture. Finished with carpeted flooring, central heating radiator, pendant lighting and socket points.

Bedroom Three 2.97m x 2.74m

A smaller double bedroom featuring a full height window to the front providing excellent natural light. The room offers space for freestanding furniture and also benefits from shelving space. Finished with carpeted flooring, central heating radiator, pendant lighting and socket points.

Bathroom 2.38m x 1.71m

Three-piece suite comprising a bath with shower attachment, wash hand basin with vanity storage beneath and WC. Additional wall-mounted vanity storage is provided. Finished with vinyl flooring, tiled splashbacks, opaque window to the front, heated towel rail and flush ceiling light.

Grounds

To the front, there is a private driveway providing parking for two vehicles, with a slabbed pathway leading to the entrance. A lawn area sits to the front, with fencing separating the neighbouring garden and various shrubs adding interest. A timber gate provides access to the side of the property, where a detached timber garage/workshop with power is located, along with two small timber sheds to the rear. The enclosed rear garden offers a peaceful outdoor space, featuring a cherry blossom tree, small lawn and bedding area. There is a slabbed seating area ideal for outdoor dining and BBQs, along with a whirligig. Fencing to either side provides privacy, with steps leading up to the kitchen door.

Location

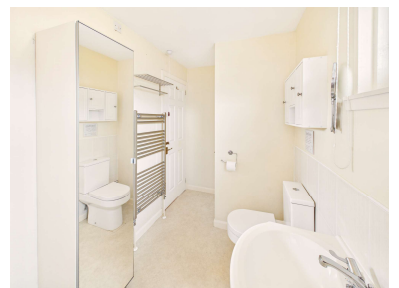
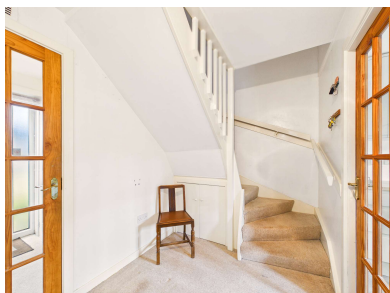
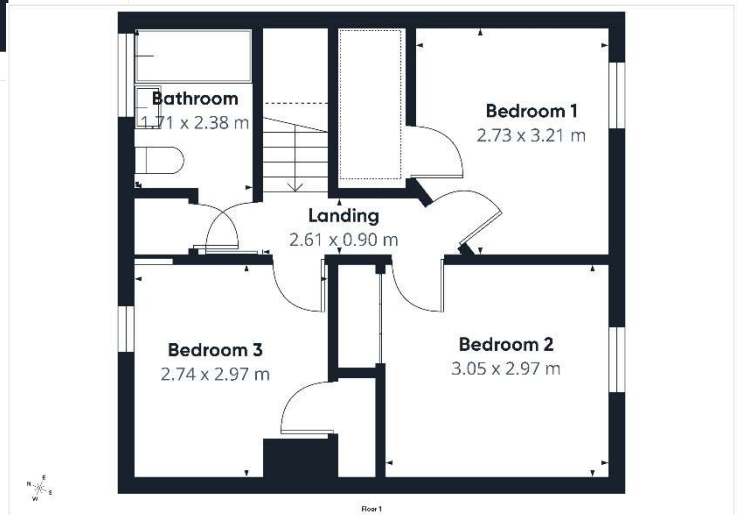
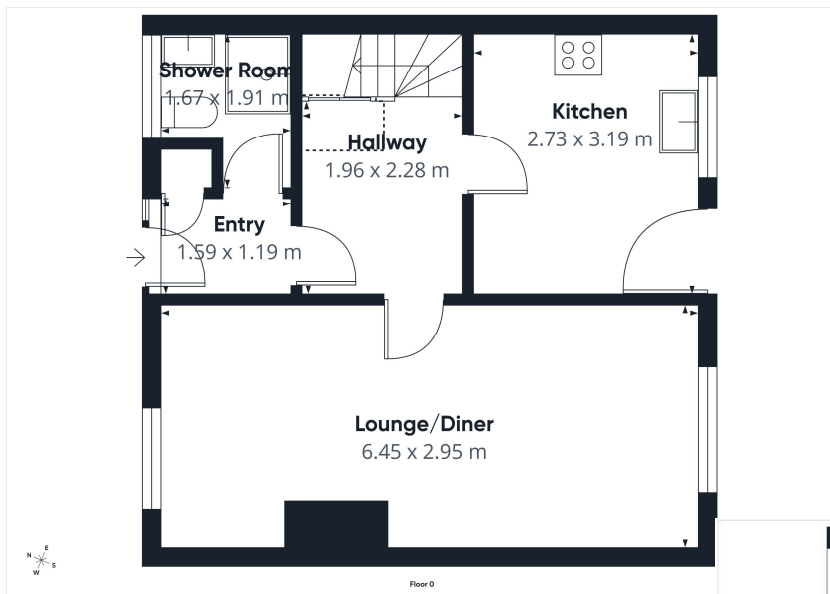
The quiet village of Kilmichael has a local pub and restaurant called the Horseshoe Inn, a primary school and a small church. Kilmichael also holds various local events such as a gala day, ceilidhs and motor cross championships. Kilmichael also has plenty to offer in the way of forest walks with spectacular scenery or you could take your bike a short distance to Achabrec bike trail. Kilmichael is situated approximately 5 miles from Lochgilphead, which has lots of amenities such as a Co-op, Tesco express, hospital, dentist, vets, school, local shops, pubs, restaurants and much more. Only two hours from Glasgow airport, and ten minutes from the local town Lochgilphead.

Thinking of selling or switching Agents?

Call now to find out more about the best deal in your area.

Lochgilphead office 01546 607045 or Oban office 01631 561130

These particulars were prepared on the basis of our knowledge of the local area and, in respect of the property itself, the information supplied to us by our clients. All reasonable steps were taken at the time of preparing these particulars. All statements contained in the particulars are for information only and all parties should not rely on them as representations of fact; in particular:- (a) descriptions, measurements and dimensions are approximate only; (b) all measurements are taken using a laser measure (therefore may be subject to a small margin of error) at the widest points; and (c) all references to condition, planning permission,



At **Argyll Estate Agents** we pride ourselves on offering a professional proactive service to all of our customers. Whether you are buying or selling we are here to help you achieve the best possible results with the minimum of fuss. With years of sales experience, we have developed a modern approach to the property market with flexible working hours and a strong emphasis on technology. Combine this with a national online presence and our local knowledge then you have a winning formula. Thinking of selling your property? We will give you an honest and accurate summary of current market conditions and clearly explain the ins and outs of the Home Report. We will also inform you of what we at Argyll Estate Agents provide in the way of service to ensure your property is marketed professionally and effectively allowing you to realise the full market potential.

If you are thinking of buying or selling and are unsure of the process please feel free to give us a call to have a no obligation chat on how we can help you get started.

What's included

Your property is displayed in our prominent High Street windows in Oban and Lochgilphead
We advertise in all major property websites more than any other Agent in Argyll
You only pay our sales fee from the proceeds of your sale on the day of completion
Valuable local knowledge with all the services offered by a city based agent
Wide-angle photography as standard
Instruction and support completing your Home Report
Agreeing on your proactive marketing strategy
The production of property particulars and floorplan
Regular email alerts tailored to motivated buyers on our extensive mailing list
Unique property matching service with buyers from around the UK and abroad
Social media posts on Facebook, Twitter, Instagram and Youtube
Erection of a standard for sale board at your property
All postage, stationary and telephone charges
Liaising with both Solicitors through to sale completion

Marketing upgrades available on request

Highly rated professional photographers as used by the big brands
Licensed aerial photography (subject to location and weather)
Qualified accompanied viewings carried out
360 Virtual walk-through tours
Hard copy glossy brochures (minimum quantity 30 copies)
Local and National press advertising (at preferential rates)

We can match any product or service offered by any UK estate agent. Simply let us know your requirements and we will make arrangements with one of the many contacts we have in the industry.

Head Office:
20 Argyll Street, Lochgilphead
Argyll PA31 8NE

Lochgilphead area: 01546 607045 / **Oban area:** 01631 561130
Mobile: 07771 541578 **Email:** mail@argyllestateagents.com



ARGYLL
Estate Agents



We have prominent window displays in the main thoroughfares of both Lochgilphead and Oban. Our office is open by appointment Mon to Friday from 9am until 5pm. We can help with all aspects of property sales. We have local and National Solicitors, Mortgage Brokers and Surveyors ready to help offer you detailed quotations and give free impartial advice with no obligation to proceed. Why take the risk and pick a name off the internet or phonebook? Getting the right advice at the start can save you time and money in the long run. You do not need to buy your property through us for this service. It is free to everyone looking for a tried and trusted property professional. Simply complete the 'Contact Professionals' form on our website and we will pass on your details and requirements.